

ACTIVITY REPORTS OF THE INSTITUTE OF TURKISH CULTURE STUDIES

Inter Cultural Studies of Architecture (ICSA) in Japan 2021

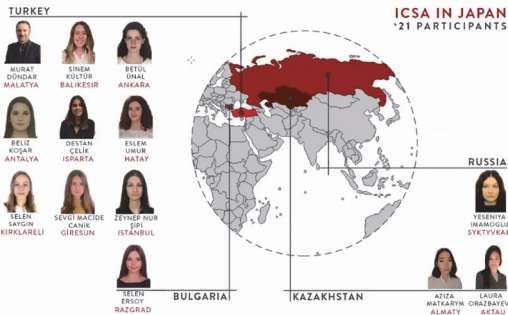
Based on the general exchange agreement between Mukogawa Women's University (MWU) and Bahçeşehir University (BAU), ICSA in Japan, a short-term study exchange program for BAU students to study together at MWU, has been held annually. However, under the influence of COVID-19, ICSA in Japan 2021 was conducted online, as in the previous year, from June 25 to July 29, 2021.

As in the previous programs, BAU students tackled design projects for second-, third- and fourth-year students of MWU's Department of Architecture. By participating in this program, they gained knowledge, learned techniques, and increased their awareness of architectural design. On Saturday, MWU faculty members gave online lectures in place of the fieldwork trips that had been offered in previous years. The welcome ceremony was held at the beginning of the program, and the completion and farewell ceremony were held at the end. These gatherings brought together students and faculty from MWU's Departments of Architecture and Landscape Architecture.

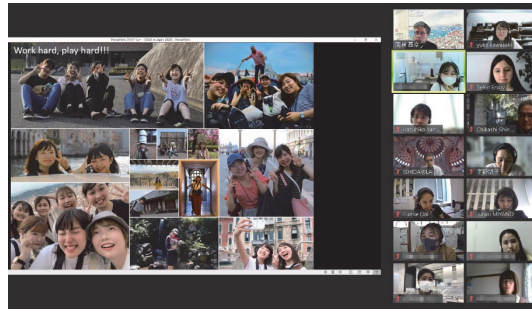
Participants

Professors: Professor Murat Dündar, Assistant Professor Sinem Kültür, Teaching Assistant Betül Ünal

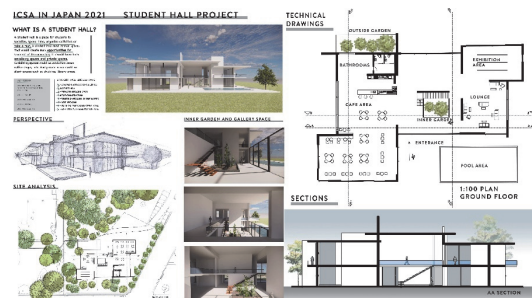
Students: Aziza Matkarym, Beliz Koşar, Destan Çelik, Eslem Umur, Laura Orazbayeva, Selen Ersoy, Selen Saygın, Sevgi Macide Canik, Yeseniya Imamoglu, Zeynep Nur Şipi



At the welcome ceremony on June 25, each BAU student introduced her own hometown.

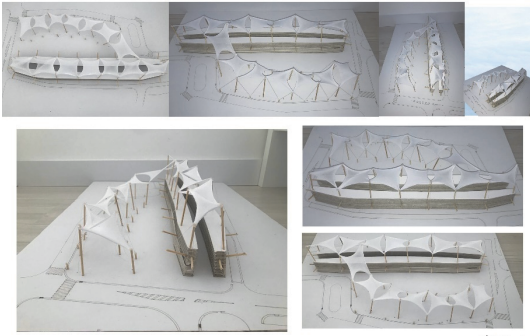


At the welcome ceremony, MWU student representatives gave welcome speeches in English or Turkish.



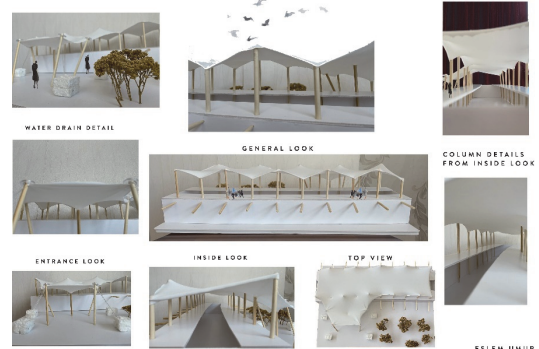
Results of design project for second-year students of MWU's Department of Architecture: Student Hall

MODEL PHOTOS



Bilal Kopr 3

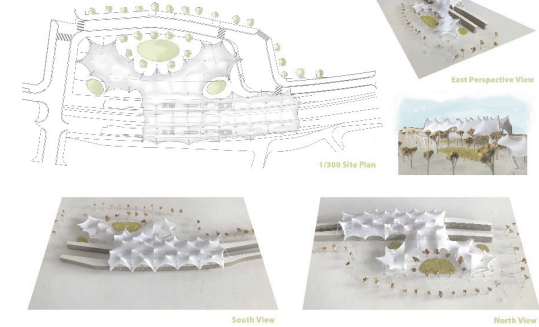
HANSHIN NARUO STATION WITH MEMBRANE ROOFING



ESLEM UMUR



HANSHIN NARUO STATION WITH MEMBRANE ROOF



Results of design project for third-year students of MWU's Department of Architecture: Hanshin Naruo Station with Membrane Roof

Paradise Along Waterfront

Design Idea
Aim is to create urban scale and open courtyards that are not closed and increase connection with the environment, where people can gather, socialize.

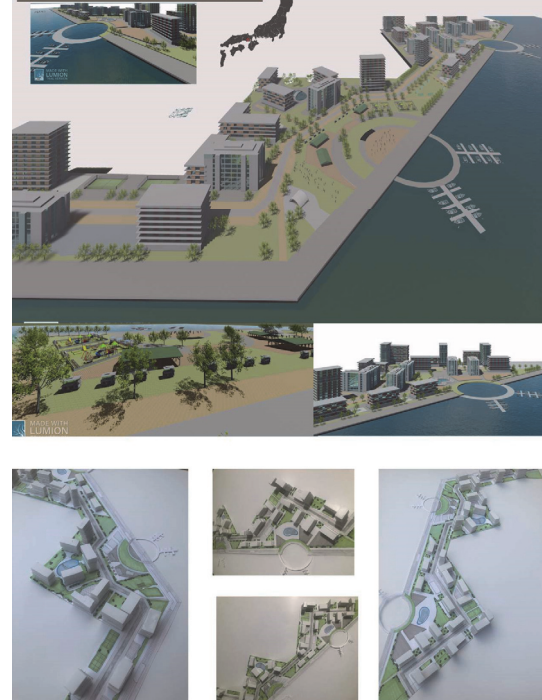
Permeant
Permeant contributes to sustainability by collecting rain water.

Number of Floors	Number of Blocks	Total Number of Residents
12 Floors	7	290 X 7
8 Floors	8	190 X 8
4 Floors	8	210 X 4
		4390

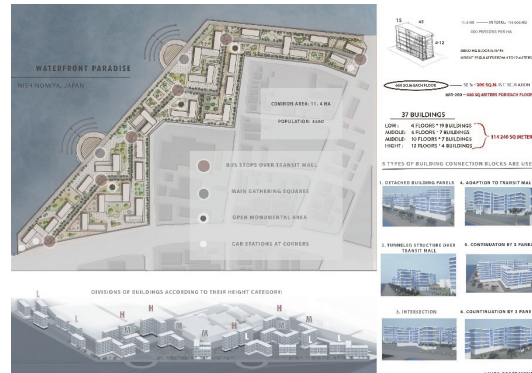
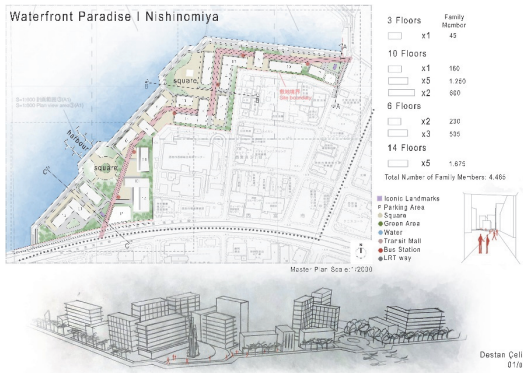
Square
Socializing Zones
Festival Area
Harbor



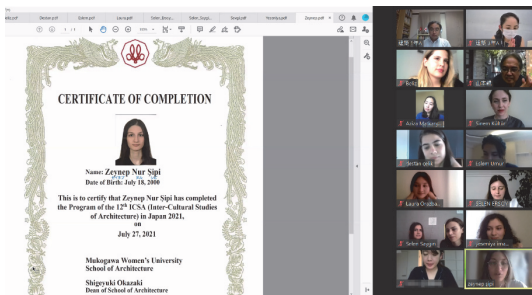
WATERFRONT PARADISE



Results of design project for fourth-year students of MWU's Department of Architecture: Waterfront Paradise



Results of design project for fourth-year students of MWU's Department of Architecture: Waterfront Paradise



Scene from the certificate presentation at the completion ceremony on July 29.



Group photo at the farewell ceremony.